



**WELCOME TO  
CAMPHILL MK**

---

---

# CONTENTS

---

1. **Welcome from our CEO**
2. **About Us**
3. **Joining Our Community**
4. **We Are Expanding**
5. **Our Workshops**
6. **A Week Day at Camphill MK**
7. **Working at Camphill MK**
8. **Keep in Touch**



---

# WELCOME

---

Camphill Milton Keynes is a very special place; home to 70 residents it is a warm and welcoming community for adults with learning disabilities where everyone is invited to take on a role and become a key part of the community.

Our residents are at the centre of everything we do, they inform the workshops we deliver, the structure of the day, the decisions we make, and the staff we appoint. The residents attend trustee meetings, are involved in strategic planning, and share their thoughts on our work with the team every day.

By working in this way, we have built a community that is uniquely connected, passionate, and focused on supporting each other.

As we look to the future, Camphill MK has plans to grow. We are building new accessible accommodation and workshops to support our current residents as they grow older and needs change, offering opportunity to support even more people with disabilities.

Thank you for being interested in what we do.



**Tim Davies**  
**Chief Executive Officer**



---

# ABOUT US

---

Camphill MK is a community of 70 adults with learning disabilities and autism who are encouraged and supported to maximise their potential through the experience of living, learning, working and celebrating in community with others.

We provide a strong supportive environment where residents gain self-confidence and personal independence within an enabling environment.

Residents get involved in meaningful activities every single day through our gardening and food production projects, in the weavery, pottery studio, Chrysalis Theatre, upcycling centre and café. These days are full of purpose and also include trips out, volunteering in the local community and undertaking daily tasks such as shopping and visiting the hair dressers.

**BUILDING  
COMMUNITIES  
WHERE PEOPLE  
LIVE, WORK,  
LEARN AND  
CELEBRATE LIFE  
TOGETHER**



---

# JOINING OUR COMMUNITY

We have 11 different houses at Camphill MK accommodating residents with a range of learning disabilities, autism and other conditions.

The shared houses range from 3-bedroom to our largest house which has 11 bedrooms. Each resident has their own door-key and signs their own tenancy agreement.

We welcome self-referrals or referrals from family members and social workers. The community most suits people who would choose to engage in our workshops and benefit from the breadth of activities we offer.

Camphill MK is a sought-after place to live and we would recommend you contact us to have a show around, and see if it's the right fit.

To enquire about our joining our community or to book a show round, please contact us on 01908 235000.

**"CAMPBILL IS THE BEST PLACE TO LIVE BECAUSE THERE'S REALLY GOOD PEOPLE; STAFF, RESIDENTS, I JUST LOVE LIVING HERE".**

Stuart (resident since 2004)



---

# OUR WORKSHOPS

---

Work is seen as an important part of residents' lives; it helps to develop their full potential and their sense of responsibility and dignity.

Each household's daily structure is very similar, and this 'rhythm' of the day is common to all Camphill communities, forming an important part of each resident's life.

We have a wide variety of workshops available, from Arts & Crafts including weaving, embroidery and needle work, to the Bakery and Landcraft.

The residents work is what helps our community thrive. Their artistic creations are sold at our shop and Fairs and are displayed in exhibitions.

Their performances are seen in our onsite theatre. The food they grow and make is sold and eaten in the café, and the newsletters and radio content they create are what helps keep our followers and supporters informed about the Camphill community.



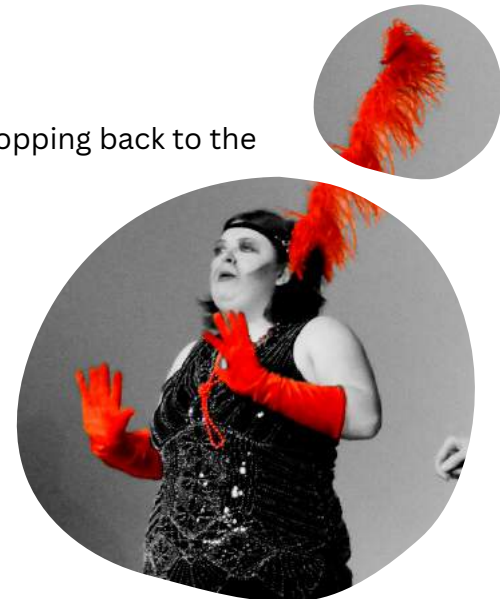
---

# A WEEK DAY AT CAMPHILL MK

At Camphill MK, we enjoy a varied programme with trips to leisure attractions, swimming, cycling etc, however the day in the main is structured, supporting residents to understand what their day will look like and support those who need routines to help them maintain calm.

This is how an average day looks:

7.00am - 7.30am	Rise & Shine - it's time to start the day
7.30am - 8.00am	Breakfast - joining housemates in their dining room
9.00am - 10.30am	<b>Workshop A</b> , Session 1
10.30am - 11.00am	Break Time - a cuppa and piece of fruit
11.00am - 12.00pm	<b>Workshop A</b> , Session 2
12.00pm - 1.00pm	Lunch - opening up their packed lunch or popping back to the house
1.00pm - 2.30pm	<b>Workshop B</b> , Session 1
2.30pm - 3.00pm	Break
3.00pm - 4.00pm	<b>Workshop B</b> , Session 2
4.00pm - 5.30pm	Home-time - back to houses for relaxation
5.30pm - 6.30pm	Dinner Time
6.30pm - Bedtime	Evening - join in a class such as dance or bingo or relax at home



Each resident has dedicated time with their key worker and has the option to access amenities off-site and access the wider City of Milton Keynes, which offers plenty of opportunities for work, leisure and socialising. Weekends at Camphill are generally more relaxed and people can enjoy their free time after a week in which they've worked hard and made a contribution to the community.

---

---

# WE ARE GROWING

Accommodation for adults with learning disabilities is in high demand and our facilities are full. Our population is ageing and need more support through accessible facilities. Our capital programme will:

- support our ageing population, surrounded by friends & familiar faces
- accommodate individuals with physical needs and those at all stages of their adult life
- meet the demand for more spaces
- create spaces partner community organisation can access and use

## We are building:

- 60 new accessible rooms for residents
- 8+ new buildings
- Workshops unit (pottery, weavery, tools refurbishment)
- Adaptations to the Chrysalis Theatre
- Expanded car park
- Outdoor Education Zone with allotments, forest gardens, raised beds, polytunnels





---

# WORKING AT CAMPHILL MK

We are proud that our staff survey showed a team that overwhelmingly identified as inspired to give their best at work, feel supported by colleagues and managers; feeling that the work place is safe and note that they receive regular support and supervision.

Staff are offered detailed training to support their growth within the organisation, enabling us to offer staff development and regular promotions

As well as offering pension, holiday pay and sick pay, we also provide shared meals to care staff during their shifts, and a free daily focaccia for workshop and office staff. There is a discount in our cafe and shop, free parking and free access to tea/coffee and fresh fruit.

**"THE FEELING OF  
COMMUNITY IS  
AMAZING AT CAMPHILL.  
I FEEL PART OF A TEAM  
LIKE NO OTHER  
WORKING ENVIRONMENT  
I HAVE KNOWN."**

Staff Survey Quote 2022

We are proud that staff retention is high, with many staff members being part of the team for many years. By joining Camphill MK, you are joining a community and get to be part of our shared celebrations, trips out and events.





01908 235000

office@camphillmk.co.uk

www.camphillmk.co.uk

